



Self-Guided Safari Packet

6th-8th Grade, Revised July 2011

On behalf of the entire staff at the Alaska Zoo, we would like to personally thank you for recently booking a Self-Guided Safari to our facility. We have been working hard to expand and improve your experience here at the park, and we appreciate your support.

This Self-Guided Safari packet contains information you will find useful while planning your visit. It includes a park map, field trip guidelines, a teacher flyer and activities for the students. In an effort to seamlessly tie your field trip into your curriculum, we have also developed new educational worksheets. In the case of very young children who are unable to read, these worksheets are designed to be just as effective when read aloud.

Please print and fill out the admissions form you received in your confirmation email prior to your arrival at the zoo, and remember that ***education prices are group rates***. They only apply to groups arriving together with one form of payment. ***Individual members arriving or paying separately may be asked to pay full admission price***. Current zoo pass holders are not required to pay general admission for the Self-Guided Safari, but pass numbers are necessary during check-in, so please collect this information beforehand. In order to qualify for our group education rates, payments must be processed as one lump sum. To make the admissions process run smoothly and avoid congestion at the zoo entrance, please ***keep all students together on the bus until check-in is complete by the teacher or chaperone***.

We highly recommend you arriving 15 minutes prior to your schedule time to ensure adequate check-in time. We often have several bookings schedule throughout the day, so your promptness is appreciated. Please call our Education Office at 907-346-2858 if you will be late or need to cancel.

Please organize your group in advance. ***The proper ratio for students under 12 is 1 adult for every 5 students. Students over 12 must have 1 adult for every 10 students***. Chaperones must stay with children to prevent disruptive behavior, and we reserve the right to refuse admittance to groups that are out of ratio.

We are continuing to create many new resources for you, so please check back often for updates. Please visit our website at www.alaskazoo.org to learn more about what the zoo has to offer. We always welcome feedback!

Once again, thank you for your Self-Guided Safari reservation. We look forward to your visit!

Sincerely,

Katie Larson
Education Director
klarson@alaskazoo.org

Marla Wales
Outreach Coordinator
outreach@alaskazoo.org

Stephanie Hartman
Camp Coordinator
shartman@alaskazoo.org

FIELD TRIP GUIDELINES: HELP US PROVIDE A PEACEFUL HOME FOR OUR ANIMALS!

The zoo is a great place to visit and is also home to many orphaned and injured animals who cannot be released back to the wild. Visitors of all ages should behave in a respectful manner while visiting the home of our animals.



No running!
Why?

You may get hurt if you fall! Our trails are uneven, so walking is the safest way to see the zoo. You also never know when we will be walking animals on trails.



No feeding!
Why?

We feed our animals healthy food daily. Human food can make animals sick. If we do not know what they have eaten, we cannot help them. Our animals may bite at any time.



No climbing!
Why?

The trail fences are for protection of both humans and animals. No person of any age (except zoo staff) should go over or reach across fences. Fences may break.



No yelling!
Why?

Kids like to “hoot” or “growl” at the animals. This behavior is not nice to animals and will not result in the animal making noises. Many animals have sensitive hearing.



No throwing!
Why?

Kids like to throw rocks or snow at the animals. This is cruel behavior toward animals, and adults need to stop this at all times.

Zoo staff and volunteers reserve the right to ask any individual or group to leave zoo property if the above rules are not obeyed. Please join us in keeping a peaceful and respectful home for our animals while teaching kids to respect animals. The animals depend on all of us for their care!

FREQUENTLY ASKED QUESTIONS (FAQ'S) ABOUT THE ZOO

Q: How should I pay for my field trip?

A: We accept cash, checks, VISA or Mastercard. In order to qualify for a group rate, payment must be made in a single transaction.

Q: Are there any spots at the zoo where my students may eat lunch?

A: We have many eating areas available for groups.

Our covered picnic pavilion seats up to 60 students. It is available on a first-come, first-served basis.

Our indoor greenhouse and classroom are available by reservation during winter months. Each seats up to 50 students. Call 907-346-2858 for more information.

Food purchased in the zoo's Coffee Shop may be eaten on the deck or inside the coffee shop, although space is limited.

Q: Where do we get our animals?

A: The majority of our animals were rescued from the wild after being orphaned or suffering injuries. The rest were born in human care, whether at our zoo or at other facilities.

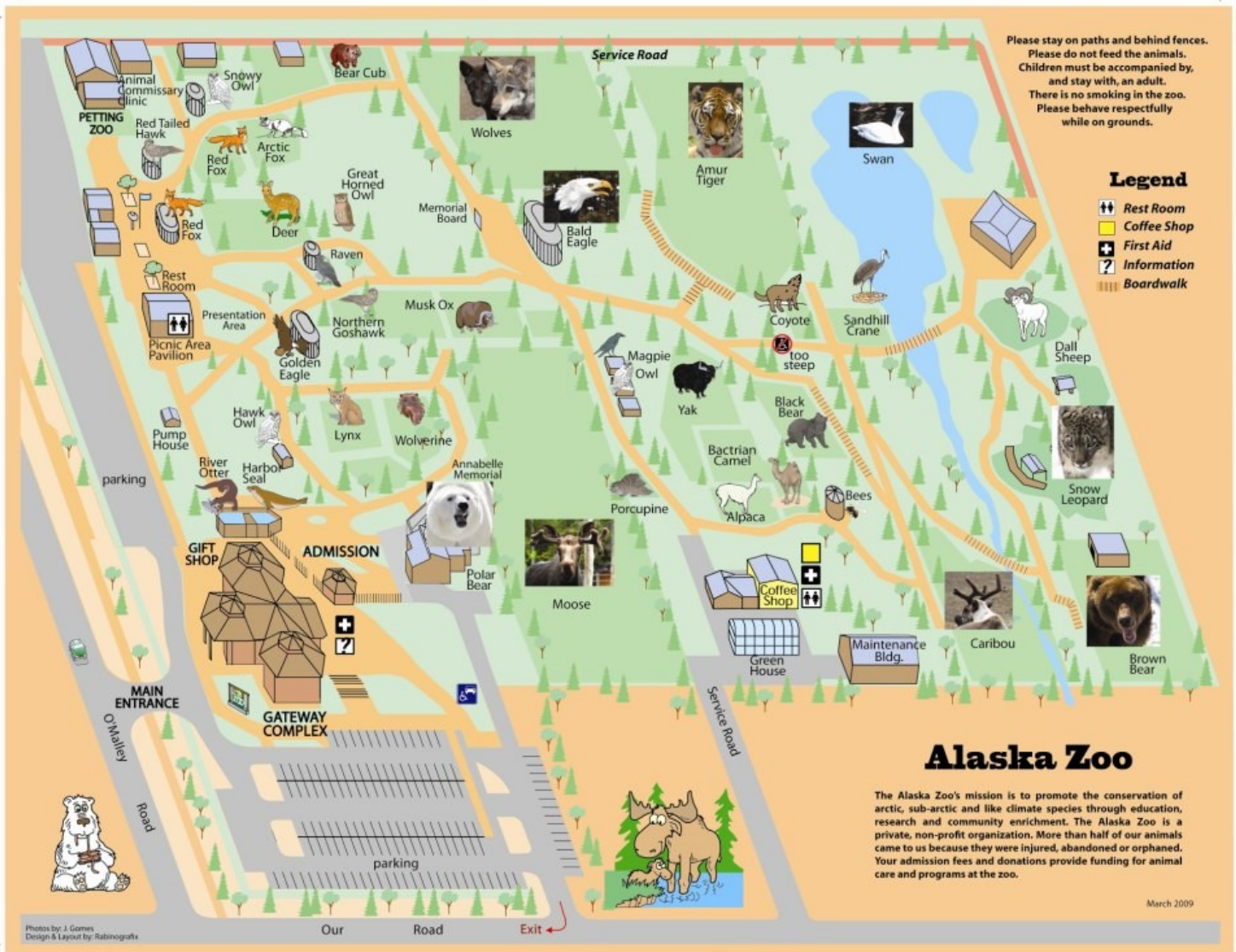
Q: Where do we get our operating funds?

A: We are a private, non-profit facility. We rely on revenue from visitors, donations and grants.

Q: When is the petting zoo open?

A: It is only open when we have volunteers to staff it. We cannot leave it open unattended due to safety concerns for both visitors and animals. It is open daily during summer months and on special event days. We may also be able to open it for special education programs.

ZOO MAP



REMINDERS:

- **Things to bring with you:**
 - One form of payment for your group (parents should pay you or the school in advance).
 - A completed admissions form
 - Annual pass information: You must either bring the actual passes with you OR a list of pass information consisting of last name and pass numbers of annual pass holders. Groups without passes or requested pass information will not be able to use them toward entry.
- Admissions staff may ask unorganized groups to step out of line.
- Keep children on bus and clear of admissions until payment has been made.
- Please help us make admission easy and quick for everyone!

R.E.S.P.E.C.T. our animals. No running, feeding animals, climbing, yelling (hooting, growling, etc.), or throwing items. Non-compliant groups will be escorted off grounds.



Alaska Zoo's EdZOOcation



Step out of your classroom and into ours!

Off season discount: Visit the zoo on a scheduled field trip from August 16, 2011 to March 31, 2012 and receive ONE FREE student admission for every 10 paying students. This promotion excludes Create-a-Camps. Field trip prices include general admission.



SELF-GUIDED SAFARI

For students of all ages! Bring your group for a self-guided walk through the zoo. Educational packets are emailed after every booking which include animal information, worksheets, admission forms and more! To schedule, all ASD teachers must submit a Community Resources Request form via mail or fax to Community Resources. All other educators, contact Marva Stevens at ASD Community Resources, (907) 742-4147, to schedule!
Cost: \$6/student (age 3-17) and \$9/adult (age 18+)

FIELD TRIPS TO THE ZOO!

HANDS-ON ANIMAL DETECTIVES

For students 5th grade & younger! Schedule a 45-minute session with zoo staff and items from our hands-on collection, including furs and more! Then visit an animal behind-the-scenes with staff!
Cost: \$8/student, \$9/adult

CRITTER TALES

For students 1st grade and younger. During this 30-minute program, students listen to an animal picture book and then visit up close with the book's star.
Cost: \$8/student, \$9/adult

ZOO SCHOOL

For students 3rd grade and older. This is a 1.5 hour program which includes a GLE-aligned presentation on a topic of your choice, followed by an animal encounter. Topics include Polar Bears & Climate Change, Wild About Wolves, Alaskan Owl Antics and more! Exciting new topics include Zoo Clue and Toys for Animals!
Cost: \$9/student, \$9/adult

GUIDED ENCOUNTER

For students 3rd grade and over. Take a 1.5 hour guided tour to see as many zoo animals as possible, including one behind-the-scenes stop at our polar bear habitat.
Cost: \$9/student, \$9/adult

DISCOVERY TOUR

For students 3rd grade and over. This tour is similar to our Guided Encounter, but is 2 hours in length and includes 3 behind-the-scenes stops at polar bear, wolves and tigers!
Cost: \$10/student, \$9/adult

Note for field trips: There is a ratio of 1 adult for every 5 students under the age of 12 and 1 adult to for every 10 students over 12.



BRING THE ZOO TO YOU!

ANIMAL AMBASSADOR OUTREACH

Schedule an animal and handler to visit your classroom and receive a 30-45 minute presentation on an animal of your choice! Ambassador animals include great horned owl, red fox, porcupine and more (subject to change).
Cost: \$80/classroom (Anchorage, Eagle River, Chugiak) and \$110/classroom (Girdwood and Mat-Su)

HANDS-ON ANIMAL DETECTIVES

We will bring in items from our hands-on collection to your classroom including furs, feather, horns and more!
Cost: \$50/classroom (Anchorage, Eagle River and Chugiak) and \$80/classroom (Girdwood and Mat-Su)

GUEST SPEAKING

Many of our zoo school programs can be presented in your classroom if you are unable to visit the zoo.
Cost: \$50/classroom (Anchorage, Eagle River, Chugiak) and \$80/classroom (Girdwood and Mat-Su)

Note for all outreach: Classes combined in one room will be considered one classroom fee. Multiple classrooms with separate presentations will be charged separately.

Please contact the zoo's Outreach Coordinator Marla Wales at outreach@alaskazoo.org or (907) 346-2858 for more information or to schedule a program!

CREATE-A-CAMP

This is a full- or half-day camp for all ages on a topic of your choice! Includes behind-the-scenes visits, snack and crafts!
Cost: \$20/half-day student, \$40/full-day student, \$9/adult

To schedule a Create-a-Camp, contact Camp Coordinator Stephanie Hartman at slhartman@alaskazoo.org or (907) 346-2858!

Visit the zoo's website at www.alaskazoo.org for more teacher resources!



Field Trip Pre-Test



1. T/F: Polar bears do not hibernate, but remain active hunting seals all winter.
2. T/F: Porcupine quills are made of keratin, like human hair.
3. T/F: Bald eagles in the lower 48 have suffered great declines due to the use of fertilizers.
4. T/F: Amur tigers are critically endangered, with less than 500 remaining in the wild.
5. T/F: Only male Dall sheep have horns.
6. T/F: Male brown bears are called “boars”, females are called “cows” and young are called “cubs”.
7. T/F: Musk oxen protect themselves from predators and winter cold by forming a tight circle and facing outward.
8. T/F: When a harbor seal rests on land it is called “hauling out”.
9. T/F: Adult female moose are larger than adult male moose.
10. T/F: In Alaska, wolf territories may exceed 1000 square miles.
11. T/F: Under their spotted fur, snow leopards have spotted skin.
12. T/F: Wolverines are the largest terrestrial member of the weasel family.
13. T/F: Ravens are often found at high altitudes, even on top of Mount McKinley.
14. T/F: Forty percent of the world’s polar bears are found in Canada.
15. T/F: Red foxes can be identified by their white-tipped tail and black legs.
16. T/F: The red-tailed hawk is the most common species of hawk in North America.



Field Trip Pre-Test



Answers

1. **T/F:** Polar bears do not hibernate, but remain active hunting seals all winter.
2. **T/F:** Porcupine quills are made of keratin, like human hair.
3. **T/F:** Bald eagles in the lower 48 have suffered great declines due to the use of fertilizers, such as phosphate and nitrogen. **They have suffered declines due to pesticides like DDT.**
4. **T/F:** Amur tigers are critically endangered, with less than 500 remaining in the wild.
5. **T/F:** Only male Dall sheep have horns. **Both males and females have horns, although males are larger.**
6. **T/F:** Male brown bears are called “boars”, females are called “cows” and young are called “cubs”. **Females are called “sows”.**
7. **T/F:** Musk oxen protect themselves from predators and winter cold by forming a tight circle and facing outward.
8. **T/F:** When a harbor seal rests on land it is called “hauling out”.
9. **T/F:** Adult female moose are larger than adult male moose. **Males are larger than females, weighing up to 1300 pounds.**
10. **T/F:** In Alaska, wolf territories may exceed 1000 square miles.
11. **T/F:** Under their spotted fur, snow leopards have spotted skin.
12. **T/F:** Wolverines are the largest terrestrial member of the weasel family.
13. **T/F:** Ravens are often found at high altitudes, even on top of Mount McKinley.
14. **T/F:** Forty percent of the world’s polar bears are found in Canada. **Sixty percent are found in Canada.**
15. **T/F:** Red foxes can be identified by their white-tipped tail and black legs.
16. **T/F:** The red-tailed hawk is the least common species of hawk in North America. **They are the most common in North America.**



Scavenger Hunt

DIRECTIONS: Answers to all questions below can be found on exhibit signs at the zoo. Please do not ask zoo staff for answers.
Good luck and have fun!

1. What is the mission of the Alaska Zoo? _____

2. Bactrian camels are native to _____ and other mountainous regions of _____.
3. The massive, curled horns of male Dall sheep function as symbols of _____.
4. Describe 2 way bald eagles show great care with their eggs: _____

5. How long does it take for baby porcupines' soft quills to harden? _____
6. How does global pollution threaten polar bears? _____

7. What are the 6 distinct features of Amur tigers? _____

8. Wolverines can drag a carcass weighing _____ times their own body weight over several miles.
9. Each great horned owl's eye has a clear eyelid, called a nictitating membrane. What is the purpose of this eyelid? _____
10. What are the 3 reasons harbor seals are able to stay under water so long?

11. River otters have _____ and _____ and are able to swim _____.
12. What is the Migratory Bird Treaty Act? _____

13. Red-tailed hawks are diurnal hunters. What does the word diurnal mean?

14. Trumpeter swans are the largest member of the _____ family.
15. Moose are built for the habitat in which they survive because they have _____, a long muzzle and _____.



Scavenger Hunt **Answers**

DIRECTIONS: Answers to all questions below can be found on exhibit signs at the zoo. Please do not ask zoo staff for answers.
Good luck and have fun!

1. What is the mission of the Alaska Zoo? To promote the conservation of arctic, sub-arctic and like-climate species through education, research and community enrichment.
2. Bactrian camels are native to Mongolia and other mountainous regions of Asia.
3. The massive, curled horns of male Dall sheep function as symbols of rank.
4. Describe 2 way bald eagles show great care with their eggs: They clench their feet while walking in their nest to avoid breaking eggs. They also cover their eggs with vegetation when leaving the nest, possibly to avoid predators.
5. How long does it take for baby porcupines' soft quills to harden? One hour
6. How does global pollution threaten polar bears? Pollutants enter the ocean and deposit in the polar regions. They accumulate in the fat, leading to health problems.
7. What are the 6 distinct features of Amur tigers? Retractable claws, night vision, thick fur, coat for camouflage, tail for balance and unique stripe pattern.
8. Wolverines can drag a carcass weighing 3 times their own body weight over several miles.
9. Each great horned owl's eye has a clear eyelid, called a nictitating membrane. What is the purpose of this eyelid? It closes over the eye to moisten it and protect it from injury
10. What are the 3 reasons harbor seals are able to stay under water so long? Having less blood flow to extremities, a lower heart rate and more cells that bind oxygen to muscles (myoglobin)
11. River otters have powerful tail and webbed feet and are able to swim 6 mph.
12. What is the Migratory Bird Treaty Act? States it is illegal to kill certain migratory bird species and illegal to poses any part of a migratory bird, eggs or nest unless permitted by US Fish & Wildlife Service
13. Red-tailed hawks are diurnal hunters. What does the word diurnal mean? They hunt during the day.
14. Trumpeter swans are the largest member of the waterfowl family.
15. Moose are built for the habitat in which they survive because they have long, stilt-like legs, a long muzzle and large, sharp hooves.



3-2-1 Strategy

	Things I found out at the Alaska Zoo...
3	
	Interesting Things...
2	
	Question I Still Have...
1	



<p>What you</p> <p>Know</p>	<p>What you Want</p> <p>to know</p>	<p>What you Learned</p>



Graphic Organizer Ideas

Words in Context:

- Marine Mammal
- Indicator Species
- Apex Predator

Problem Analysis Chart:

- Global Climate Change
 - Increasing world temperatures
 - Depletion of sea ice
 - Decreasing polar bear population
 - Reducing carbon emissions
 - Snow Cat Poaching
 - Endangered species listings
 - Traditional Chinese medicine
 - Illegal fur trading
- Increased education and protection for cats

Fact and Info Organizer:

- The Alaska Zoo:
 - Animals
 - Zookeepers
 - Veterinarians
 - Groundskeepers
 - Maintenance workers
 - Coffee shop and admissions attendants
 - Educators/teachers
 - Director
 - Owner/Board of Directors

Cause and Effect Chart

Animal training Animals learn new behaviors and medical check-ups are possible

Depletion of arctic sea icePolar bear numbers are decreasing

Reduce, Reuse and Recycle Decrease carbon emissions

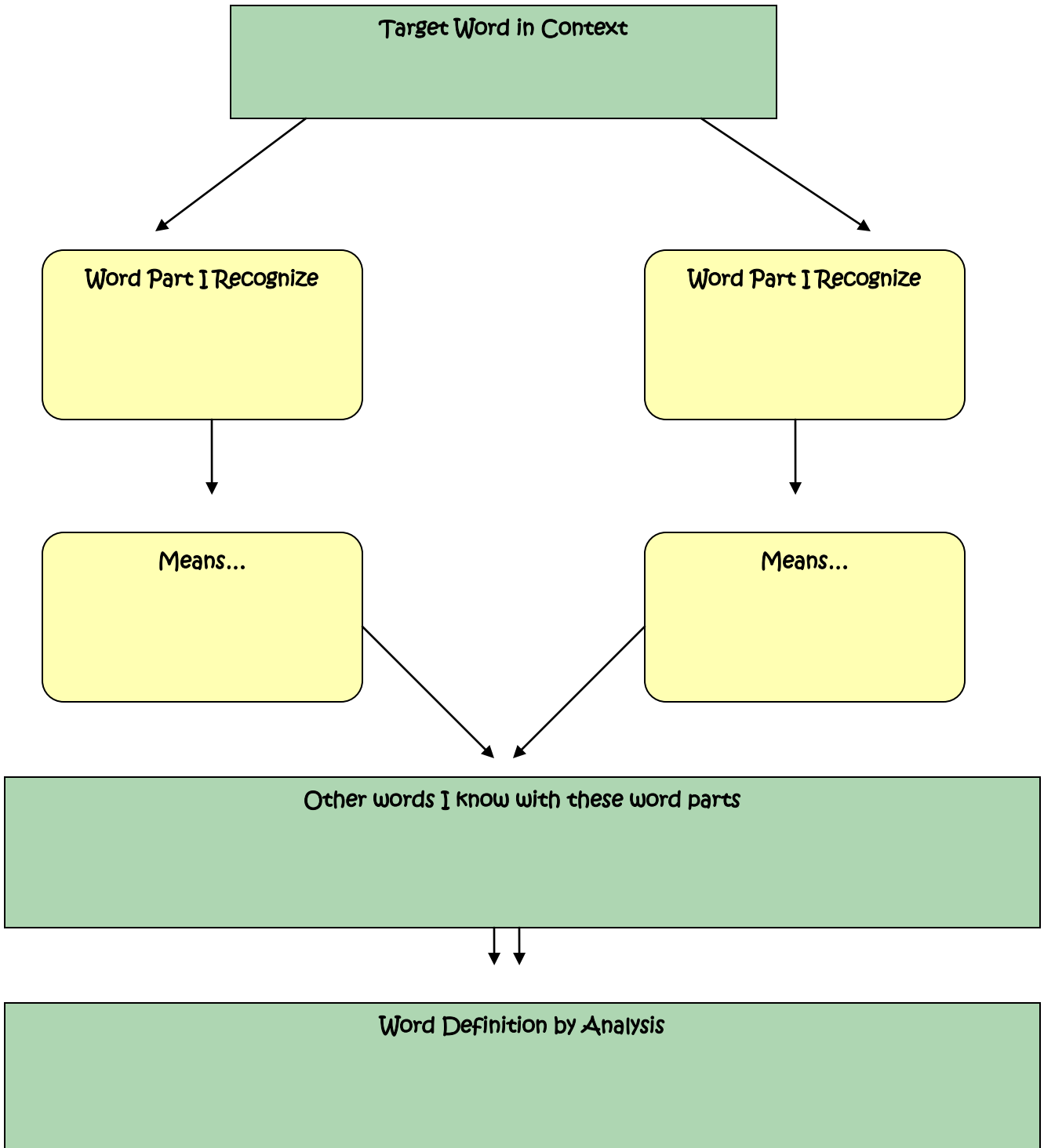
Increased wolverine trapping Wolverines are becoming threatened

Complete veterinary careAnimals in human care generally live longer than their wild counterparts

Complete veterinary careAnimals in human care generally live longer than their wild counterparts

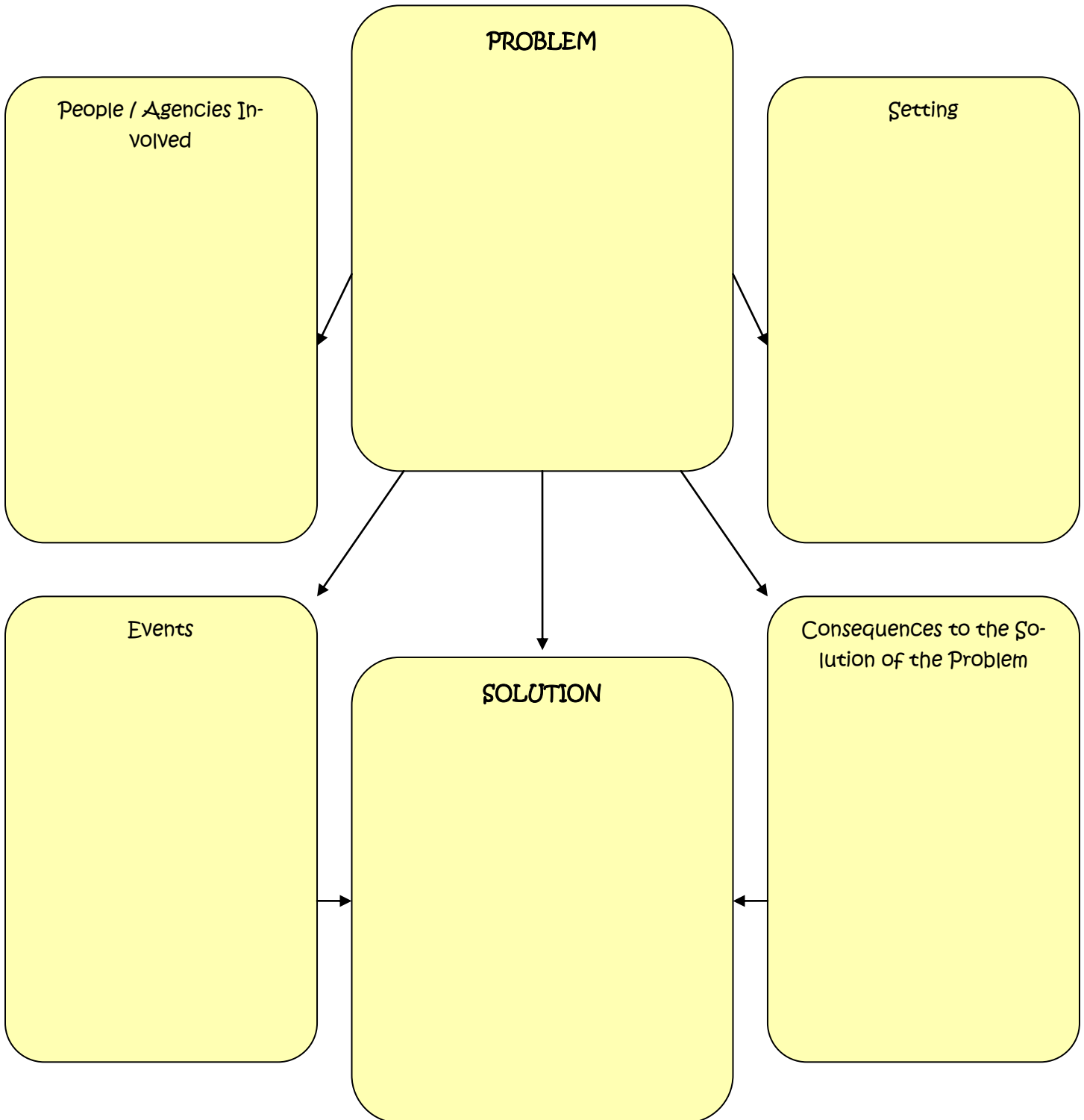


Words in Context



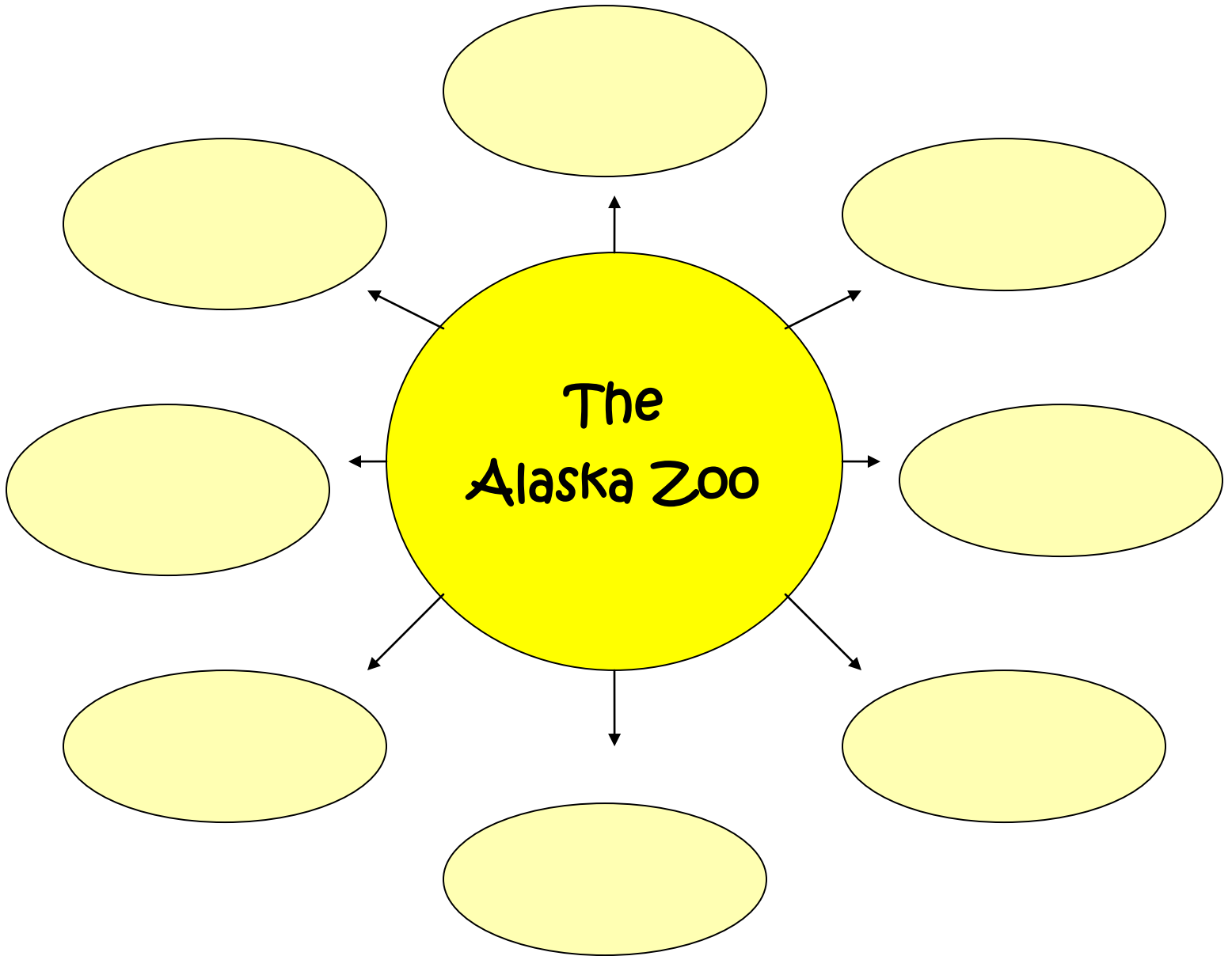


Problem Analysis



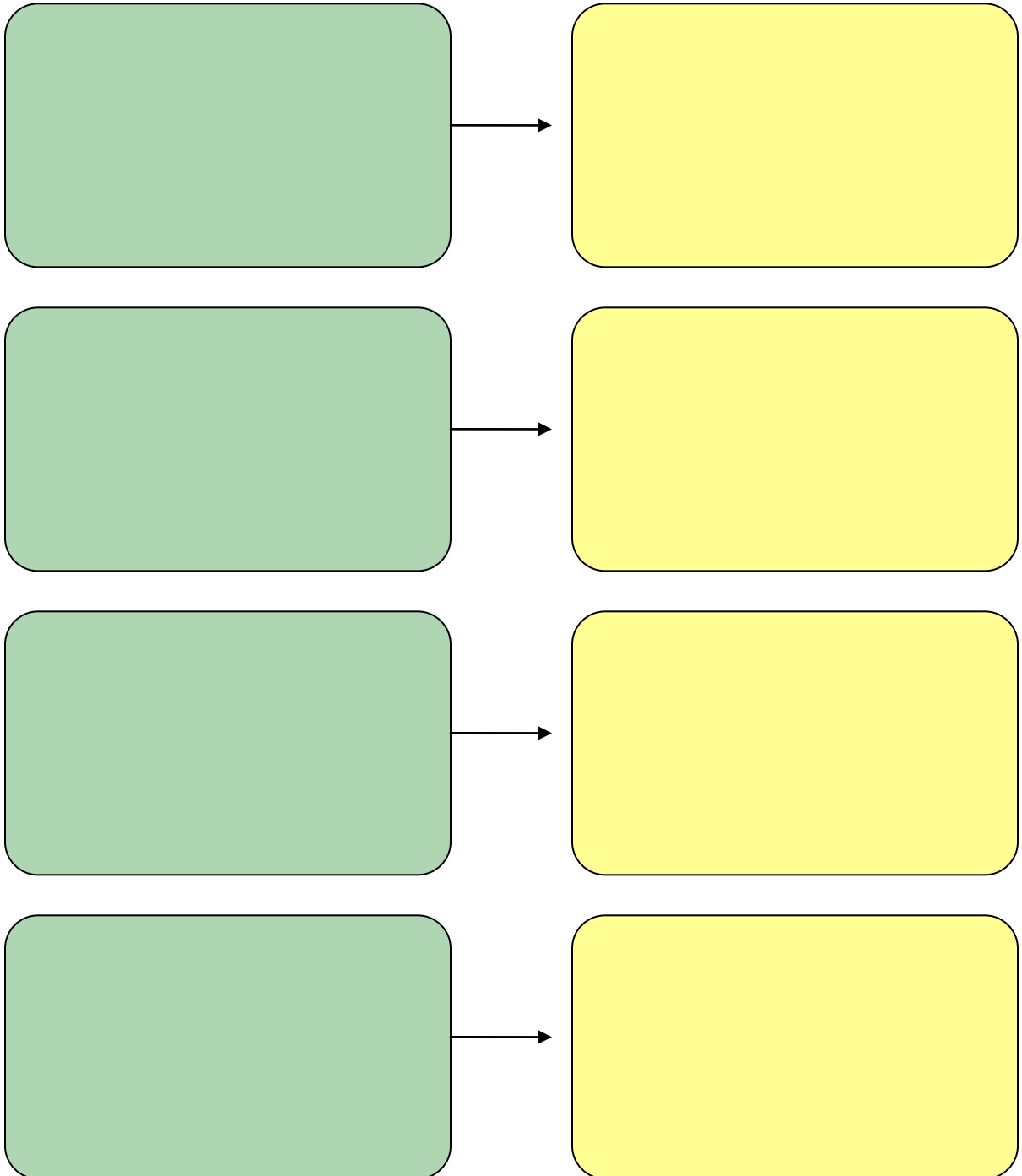


Fact and Info Organizer





Cause-and-Effect Chart





Venn Diagram Ideas

This activity can be used to compare and contrast many different animals at the Alaska Zoo. Here are suggestions for Amur tigers and snow leopards, as well as polar bears and brown bears, but some more ideas are:

- Red foxes and arctic foxes
 - Dall sheep and mountain goats
 - Bald eagles and golden eagles
 - Brown bears and black bears
 - Wolves and coyotes
 - Musk oxen and Tibetan yaks
 - Sitka black-tailed deer and caribou
 - Moose and Bactrian camels
- Snowy owls and great horned owls

When comparing Amur tigers to snow leopards, here are some key similarities and differences:

- *Both* are cats, eat meat, have whiskers, have fur, have long tails, are threatened or endangered, live in cold climates, etc.
- *Amur tigers* are larger. They weigh up to 700lbs, and they reach lengths of 13 feet. They have orange and black stripes, they live in the Russian Far East.
- *Snow leopards* are smaller. They weigh 75-150lbs, and they reach lengths of 6-7feet. They have white, tan and beige coats with black and brown spotted rosettes. They live in high mountain ranges from Mongolia to Afghanistan.

When comparing polar bears to brown bears, here are some key similarities and differences:

- *Both* are bears, eat meat, have large teeth and powerful claws, are apex predators, etc.
- *Polar bears* are much larger. Males reach lengths of 10 feet and weights of 1,500lbs. They are characterized by white fur, long necks, and webbed forepaws. Polar bears live above the Arctic Circle, and they hunt seals on packed sea ice. Their numbers are decreasing rapidly due to global climate change.
- *Brown bears* are smaller. They reach lengths of 9 feet and weights of 1,000lbs. They are characterized by brownish fur, short necks and humped shoulders. Brown bears range in mountains and open regions of North America, Europe and Asia. They are omnivores, feeding on a variety of animals, fruits and vegetables. Their numbers are decreasing due to habitat loss and conflicts with humans.



Venn Diagram

